

SBT AT GLANCE

- 34 Establishment and development
- 36 Company profile
- 38 Raw material areas network
- 48 Sugarcane value chain and SBT's endeavors
- 50 TTC Bien Hoa's diversified product portfolio
- 66 Main distribution channel





Thanh Thanh Cong - Bien Hoa JSC was formerly a Joint Venture between Bourbon Group, Sugarcane Union II and Tay Ninh Sugarcane Union

1995-2022

1995-2012

1995

Date of establishment: July 15th, 1995

Investment capital: 95 million USD

Legal capital: 28.5 million USD

Sugar manufacturer with modern equipment and process, and the most advanced technology: The main product is refined Sugar (RE) according to European standards

Sugarcane crushing capacity: 8,000 tons of sugarcane/day

2007

Converted into a joint stock company

Charter capital: 1,419 billion VND

2008

Listed 44,824,172 SBT shares on Ho Chi Minh City Stock Exchange (HOSE)

Accounted for 31.58% of total issued shares

Charter capital: 1,419 billion VND

2012

Increased sugarcane pressing capacity: 9,800 tons of sugarcane/day

Completed the Affinage Project - Raw Sugar Dissolving Workshop

Charter capital: 1,419 billion VND

2013-2017

2013

Issued 6,574,200 ESOP shares - Changed the Company's name to Thanh Thanh Cong Tay Ninh Sugarcane JSC

Charter capital: 1,485 billion VND

2015

Merged with Gia Lai Thermoelectricity JSC

The largest Sugarcane enterprise to be listed on Vietnam's stock market

Charter capital: 1,856 billion VND

2016

First time participated in VN30 Index basket

Issued 1,000 billion VND of bond: Stabilized cash flow, restructured the financial system, improved capital efficiency

Issued more than 9.1 million ESOP shares

Charter capital: 1,947 billion VND

2017

Contributed capital to TTC Attapeu Sugarcane Co., Ltd

Completed the M&A plan with Bien Hoa Sugar JSC

Changed the Company's name to Thanh Thanh Cong - Bien Hoa JSC

Completed the Corporation model, governing all TTC Sugar's business entities

Charter capital: 2,532 billion VND

2018-2021

2018

Enhanced corporate governance practices according to international standards and best practices

The first Vietnamese company to export Sugar to the US, besides China, Sri Lanka, Myanmar, Singapore, Kenya

Completed the purchase of 61,600,900 treasury stocks

Increased foreign ownership ratio to 100%

HOSE: Top 20 VN Sustainability Index (VNSI)

Charter capital: 5,570 billion VND

2019

Cooperated with ED&F Man Sugar Ltd.: Exporting Sugar products to Europe

Started strategic cooperation with DEG: European strategic investor

Signed a contract with BIDV: to expand material areas in Cambodia

Started the strategic partnership with OCB: to support farmers to receive loans

Charter capital: 5,867 billion VND

2020

The first time exceeded 1 million tons of the output of consumed Sugar
Issued 21,611,333 convertible preference shares to DEG - German Government Investment Fund

Issued 172 unsecured convertible bonds equivalent to 172 billion VND to Coretrend - Korean strategic investor

Charter capital: 6,084 billion VND

2021

Sugar output reached 1.16 million tons

Successfully mobilized 3,000 billion VND of long-term capital in the capital restructuring roadmap, and more than 1,200 billion VND of short-term capital by increasing the credit limit

Successfully deployed the Oracle Cloud ERP system for all 22 SBT's units in 4 countries: Vietnam, Singapore, Laos and Cambodia

Charter capital: 6,388 billion VND

2022

SUGAR CONSUMPTION OUTPUT MAINTAINED AT

>1,000,000 TONS

EXPORT MARKETS

29+

COUNTRIES

THE PORTFOLIO INCLUDES

75 different Sugar product lines

12 Sugar by-product lines

6 drinking water products

1 Solar Power product

ISSUED

11,992,748

shares to convert privately placed bonds for Coretrend - Korean Strategic Investor

Officially discussed the bilateral agricultural development cooperation strategy 4.0 with the Authority of Queensland, Australia.

VNSI20

Became the only Sugar company in the Index basket for the 5th consecutive years

TOTAL ASSETS

27,730

BILLION VND

Surpassed the one billion dollar mark for the first time

CHARTER CAPITAL

6,508

BILLION VND

NET REVENUE

18,319

BILLION VND

PROFIT AFTER TAX

873

BILLION VND





GENERAL INFORMATION

Website: www.ttcsugar.com.vn

INFORMATION FOR SHAREHOLDERS AND INVESTORS

9,668,879,045,641



MAIN BUSINESS LINES



8.
**Other professional, scientific,
and technological activities
not elsewhere classified**
Detail: Technical and technological
consulting services in Sugarcane
production
VSI code: 7490

RAW MATERIAL AREA NETWORK

RAW MATERIAL AREAS CROSS-BORDER MATERIAL AREAS NETWORK

After nearly 3 years of integration, SBT's system of sugarcane material areas has satisfactorily adapted to the new environment and entered the trajectory of sustainable development. It has played a fundamental role in the Sugarcane production chain.



IN THE SUSTAINABLE AGRICULTURAL DEVELOPMENT STRATEGY FOR THE 2021-2025 PERIOD, WITH THE GOAL OF INCREASING THE TOTAL GLOBAL MATERIAL AREA TO

90,000 HECTARES

TTC Bien Hoa successfully invested and owned a material area in Tully, Australia in the last fiscal year. As such, with 7 main material areas spread across 4 countries including Vietnam, Laos, Cambodia and most recently Australia, the sugarcane volume

supplied to TTC Bien Hoa's factories large enough to optimize the capacity of the production line. This is a key and differentiating factor that helps TTC Bien Hoa continue to stand firm against the fierce competition of the global sugar market.

In the first 6 months of the last fiscal year, despite the complicated situation caused by Covid, social distancing and prolonged border closure, followed by difficulties in the farming and transport of sugarcane, TTC Bien Hoa pro actively produced plans to ensure the continuity of production and supply

chains. In 2022, the harvest took place more smoothly, helping to stabilize agricultural production, creating momentum for the new season.

By the end of FY 2021-2022, SBT's total material area continued to grow and reached over 68,000 hectares, including over 36,000 hectares under the Company's ownership and nearly 32,000 hectares invested by farmers. The harvested sugarcane output also increased by 26% with the Commercial Cane Sugar (CCS) content being guaranteed as planned by the Company.

System of raw material areas, cross-border material areas (Unit: Hectares)

Country	Factory Area	Province	Contracted raw material areas	Owned raw material areas	Total
VIETNAM	1. TTCS Gia Lai	Gia Lai	11,820	500	12,320
	2. Bien Hoa - Ninh Hoa	Khanh Hoa	6,500	650	7,150
	3. Bien Hoa - Phan Rang	Ninh Thuan	2,100	-	2,100
	4. TTCS	Tay Ninh	9,000	7,010	16,010
AUSTRALIA	5. Rockingham	Tully	-	1,244	1,244
LAOS	6. TTC - Attapeu	Attapeu	2,000	11,000	13,000
CAMBODIA (*)	7. Kratie	Kratie	-	16,000	16,000
TOTAL		7 locations	31,420	36,404	67,824

* In Cambodia, this is the raw material area that TTC Bien Hoa has the right to manage and exploit

AGRICULTURAL PRODUCTION CAPACITY ENHANCEMENT IN FY 2021-2022

After many years of working with sugarcane, the Agribusiness Division team of SBT and Sugarcane farmers have accumulated plenty of farming experience. The Company has actively promoted the role of R&D activities while leveraging rich experience in management and organization to improve two main issues:



FOR AGRONOMY



Thanh Thanh Cong Sugar Cane Research and Development Center (SRDC) has been the leader in experimenting sugarcane varieties and farming techniques for many years. The Company possesses a system of modern facilities and a team of scientists with solid knowledge and field experience. In the last season, the SRDC continued to implement many agricultural extension programs such as: The 3-level seed program using tissue culture technology and one-bud seed propagation to produce disease-free and purebred sugarcane. In addition, the SRDC also applies the model of inter cropping and rotation of mung beans and smooth crotalaria to improve sugarcane farming soil, the model of high-yield original sugarcane intensive

farming with microbial organic fertilizers,... to save costs and increase income. From the specific advice and guidance of the SRDC, many farms and farmer households have increased their productivity in the 2021-2022 harvest season. Not only the SRDC, the Material Development Departments of TTC Bien Hoa factories have also actively promoted their role in communication and agricultural extension. Through initiatives and new methods such as growing sugarcane in trenches on rocky soil, using moisturizing gels, drip irrigation systems..., the income of sugarcane growers in raw material areas has increased, contributing to greater faith in sugarcane - a crop that provides a stable long-term livelihood.



RAW MATERIAL AREA NETWORK

IMPROVING AGRICULTURAL PRODUCTION CAPACITY IN FY 2021-2022



The SRDC applies tissue culture propagation techniques to produce disease-free sugarcane seedlings



The center pivot irrigation system with an irrigation area of 86 ha/irrigation cycle at TTC farm - Attapeu



REGARDING THE OPERATION OF THE AGRICULTURAL SUPPLY CHAIN OPERATION

This is an important aspect that greatly affects the economic efficiency of sugarcane cultivation. Therefore, TTC Bien Hoa has continuously standardized the methodology of organizing farming at the Company's owned farms, organizing services to provide sugarcane farmers to optimize production from land to supplies, mechanical services, and labor. And to exploit the power of the spirit of ownership, in the last season TTC Bien Hoa continued to develop a team of agri-entrepreneurs

to produce sugar cane on large areas, creating opportunities for many agri-entrepreneurs in the agricultural industry to demonstrate leadership and management skills. Results show that a series of farms in Tay Ninh province have achieved outstandingly high sugarcane yield compared to the previous year. For example, Tan Hung farm - 98 tons/ha, Ben Cau farm - 86 tons/ha, Thanh Long farm - 79 tons/ha.



TTC Bien Hoa builds an integrated supply chain model through the ERP system

Regarding sugarcane as the foundation and farmers as partners, TTC Bien Hoa will continue to invest in human and financial resources to improve the efficiency of sugarcane production, create a sustainable competitive advantage, and contribute to helping Vietnam's Sugar Industry stand firmly in the market, gradually spreading to the whole world.

MATERIAL AREA DEVELOPMENT PLAN IN FY 2022-2023



Mechanization on TTC Bien Hoa's farms

INCREASING THE FARMING AREA BY

11.5%

MAINTAINING CCS AT

10-11

INCREASING SUGARCANE HARVEST
OUTPUT BY

33%

With the goal of sustainable developing material areas in order to ensure the self-sufficiency on input materials as well as farming scale, TTC Bien Hoa is steadfast in its strategy of expanding material areas globally, increasing the farming area by 11.5%, maintaining CCS at 10-11, and increasing sugarcane harvest output by 33%. At the same time, the Company also strengthens policies to support, encourage and accompany farmers, helping them stay engaged and become rich from the sugarcane.

In parallel with the expansion of material areas, improvement activities and digital solutions continued to be applied and promoted in agricultural management including the application of the FRM digital platform, the drones to spray probiotics on a large scale. At the same time, the Company cooperates with agronomic consultants to develop an in-depth and appropriate cooperation strategy for the Agriculture 4.0 development plan. Besides, TTC Bien Hoa also developed agricultural Apps to enhance the interaction between Sugarcane farmers and agricultural extension officers in exchanging information, recommendations, technical advice, weather as well as investment and purchasing policies.



Pioneering in the journey to become a high-tech agricultural company, besides constantly improving and applying science and technology in farming, TTC Bien Hoa always accompanies farmers towards the goal of long-term profit. We work hard to eliminate prejudices about an outdated agriculture to confidently overcome challenges and head towards sustainable production activities, harmonized interests with the Farmers and the Community, and environmental friendliness.

RAW MATERIAL AREA NETWORK

FACTORY NETWORK



SUGAR MANUFACTURING FACTORY			LOCATION	SOURCE OF KEY INGREDIENTS	PRODUCTION CAPACITY (Tons of sugar per day)	KEY PRODUCTS	OPERATING TIME IN THE YEAR	BY-PRODUCTS and AFTER-PRODUCTS
1	TTCS GIA LAI		GIA LAI	Sugarcane	600	White Sugar	Seasonal	Cogeneration, Molasses, Press mud
2	BIEN HOA - NINH HOA		KHANH HOA	Raw Sugar and Sugarcane	760	Refined Sugar, Liquid Sugar	300 days	Cogeneration, Molasses, press mud, bagasse
3	BIEN HOA - PHAN RANG		NINH THUAN	Sugarcane	150	White Sugar, Yellow Sugar, Raw Sugar	Seasonal	Molasses, press mud, bagasse
4	BIEN HOA - DONG NAI		DONG NAI	Raw Sugar	400	Refined Sugar, Liquid Sugar	Year-round	Molasses, Sludge, Colored Water
5	BIEN HOA - TRI AN		DONG NAI	Raw Sugar and Sugarcane	250	Refined Sugar	Seasonal	Molasses, Press mud
6	TTCS		TAY NINH	Raw Sugar and Sugarcane	980	Refined Sugar, Liquid Sugar	Year-round	Cogeneration, Molasses, press mud, bagasse
7	BIEN HOA - TAY NINH		TAY NINH	Sugarcane	400	Raw Sugar	Seasonal	Molasses, Press mud
8	NUOC TRONG - TAY NINH		TAY NINH	Sugarcane	100	White Sugar	Seasonal	Molasses, Press mud
9	TTC - ATTAPEU		LAOS	Sugarcane	700	Organic Sugar, Yellow Sugar, White Sugar	Seasonal	Cogeneration, Molasses, Press mud
10	KRATIE		CAMBODIA	Sugarcane	350	Refined Sugar	Seasonal	Cogeneration, Molasses, Press mud
MICROBIOLOGICAL FERTILIZER MANUFACTURING FACTORY			LOCATION	SOURCE OF KEY INGREDIENTS	PRODUCTION CAPACITY (Tons of Sugar per day)	KEY PRODUCTS	OPERATING TIME IN THE YEAR	
1	TTCAD - GIA LAI		GIA LAI	Pressmud sugarcane, bagasse and other agricultural by-product biomass	10 tons/hour	Microbial fertilizer	Year-round	
2	TTCAD		TAY NINH	Mixed kiln ash and other agricultural by-product biomass	12 tons/hour	Microbial fertilizer	Year-round	
3	PRODUCTION PLANT - TTC - ATTAPEU		LAOS	Pressmud, kiln ash and other agricultural by-product biomass	10 tons/hour	Bio-fertilizers and soil improvement products	Year-round	
WATER MANUFACTURING FACTORY			LOCATION	SOURCE OF KEY INGREDIENTS	PRODUCTION CAPACITY (Tons of Sugar per day)	KEY PRODUCTS	OPERATING TIME IN THE YEAR	
1	MIAQUA		TAY NINH	Miaqua: The main raw material is water, condensate is taken from the process of evaporating Sugarcane juice in Sugar production technology. Puraqua: The main raw material is groundwater extracted from drilled wells.	Miaqua: (barrels/day) 350ml: 1,200 - 500ml: 1,200 Puraqua: (barrels/day) 350ml: 1,200 - 500ml: 1,200 - 20 liters: 350-400	Sugarcane flavored drink - Miaqua Purified water - Puraqua	Miaqua: Seasonal (depending on the operation time of the TTCS factory) Puraqua: Year-round	



FINISHED PRODUCTS AND GOODS WAREHOUSES

Region	Location	Number of warehouses	Area (m ²)	Capacity (Ton)	Channel
NORTH VIETNAM	Bac Ninh	1	620	430	B2C
	Hai Phong	1	5,000	10,000	MNC, SME, Trader
CENTRAL VIETNAM	Da Nang	1	300	200	B2C
	Quang Nam	1	4,000	8,000	Trader
	Gia Lai	3	12,380	35,000	MNC, SME
	Ninh Hoa	3	11,700	28,200	MNC, SME
	Phan Rang	1	1,600	3,500	MNC, SME
SOUTH VIETNAM	Tay Ninh	6	34,536	82,870	MNC, SME
	Dong Nai	17	46,025	85,100	B2C, Trader, MNC, SME
	HCMC	1	50	45	B2C
	Can Tho	2	4,000	8,000	Trader
	Attapeu	4	14,040	31,500	MNC, SME, Export
TOTAL		41	134,251	292,845	

MATERIAL WAREHOUSES

Region	Location	Number of warehouses	Area (m ²)	Capacity (Ton)
Central Vietnam	Ninh Hoa	1	3,000	16,000
South Vietnam	Tay Ninh	1	3,750	24,000
	Dong Nai	1	6,700	28,000
TOTAL		3	13,450	68,000





3S CENTER, DISTRIBUTOR OF JOHN DEERE

3S CENTER: SALES - SERVICE - SPARE PART
(Sales - Warranty, Repair - Genuine Parts)

Agent	Tel	Address
3S Center - Nghe An	1900 633 421	No. 312, Tan Phu Quarter, Hoa Hieu Ward, Thai Hoa Town, Nghe An Province
2S Center - Gia Lai	1900 633 421	442A Tran Hung Dao Street, Ayunpa Town, Gia Lai Province
3S Center - Tay Ninh	1900 633 421	561A Tran Phu Street, Tan Phuoc Hamlet, Tan Binh Commune, Tay Ninh City
3S Center - An Giang	1900 633 421	43/13A Tran Hung Dao, Long Xuyen City, An Giang Province

DISTRIBUTORS OF JOHN DEERE AGRICULTURAL MECHANICAL EQUIPMENT

Level 1 Agent	Tel	Address
Thanh Cong Hanoi - Hanoi	0913 395 606	No.18 Tram Street, Civil Group 12, Long Bien Ward, Long Bien District, Ha Noi
ASUOIL - Thai Binh	0772 393 333	Mr. Dong's House, Bac Son Village, Vu Ninh Commune, Kien Xuong District, Thai Binh Province
Canh Dong Vang - Thanh Hoa	0343 528 789	Ho Chi Minh Road intersection, Tho Xuong Commune, Tho Xuan District, Thanh Hoa Province
Phuong Nam - Ho Chi Minh	0908 152 455	No.688 1A National Highway, Thanh Loc Ward, District 12, Ho Chi Minh City
Tan Chuong - Long An	0918 430 126	Rach Bui Hamlet, Vinh Hung Town, Vinh Hung District, Long An Province
Thanh Dat 2 - Soc Trang	0918 453 476	No.49 1A National Highway, Ward 7, Soc Trang City, Soc Trang Province

Level 2 Agent	Tel	Address
Business household Phan Vu Phuong	0396 129 189	112 Ca Sach Hamlet, Vinh Loi Commune, Tan Hung District, Long An Province
Quoc Khanh Shop	0939 810 840	Hamlet 1, Sa Ray Town, Tan Hong District, Dong Thap Province
Business household Le Vu Quan	0901 001 716	A3, Le Hong Phong Street, Tra Noc Ward, Binh Thuy District, Can Tho City
Business household Bao Quoc	0985 876 754	Hoa Hung Hamlet, My Hoa Village, Cau Ngang District, Tra Vinh Province
Business household Hoang Vu	0939 239 207	Soc Chua Hamlet, Cau Ngang District, Tra Vinh Province

AGRICULTURAL RESEARCH INSTITUTE

THANH THANH CONG AGRICULTURAL RESEARCH INSTITUTE
Address: No.99, Binh Hoa Hamlet, Thai Binh Commune, Chau Thanh District, Tay Ninh Province
Tel: (0276) 371 29 75



ORGANIC MICROBIAL FERTILIZERS MANUFACTURING CENTER



HEADQUARTER

THANH THANH CONG AGRICULTURAL DEVELOPMENT JSC
Address: Group 2, Tan Loi Hamlet, Tan Hung Commune, Tan Chau District, Tay Ninh Province
Tel: (0276) 375 79 23

BRANCH

THANH THANH CONG AGRICULTURAL DEVELOPMENT JSC - Gia Lai Branch
Address: Lot B4 - B8, Ia Sao Industrial Zone, Ia Sao Village, Ayun Pa Town, Gia Lai Province
Tel: 0908 643 131

BRANCHES & REPRESENTATIVE OFFICE

BRANCHES

1 THANH THANH CONG - BIEN HOA JSC
Hanoi Branch
Address: 144 Minh Khai Street, Minh Khai Ward, Hai Ba Trung District, Hanoi
Tel: (0247) 301 88 82

2 THANH THANH CONG - BIEN HOA JSC
Da Nang Branch
Address: 169 Nguyen Huu Tho Street, Hoa Thuan Tay Ward, Hai Chau District, Da Nang City
Tel: (0236) 372 65 68

3 THANH THANH CONG - BIEN HOA JSC
Tay Ninh Branch
Address: 561A Tran Phu, Tan Phuoc Hamlet, Tan Binh Village, Tay Ninh Province
Tel: (0276) 375 73 33

4 THANH THANH CONG - BIEN HOA JSC
Can Tho Branch
Address: 177B Nguyen Van Cu Street, An Hoa Ward, Ninh Kieu District, Can Tho City
Tel: (0292) 364 44 99

REPRESENTATIVE OFFICE

1 THANH THANH CONG - BIEN HOA JSC
Representative Office in Ho Chi Minh City
Address: 253 Hoang Van Thu Street, Ward 2, Tan Binh District, Ho Chi Minh City
Tel: (0247) 301 88 82

2 THANH THANH CONG - BIEN HOA JSC
Representative Office in An Giang
Address: 361/31 Tran Hung Dao Street, My Phuoc Ward, Long Xuyen City, An Giang Province
Tel: (0276) 375 32 50

SUGARCANE VALUE CHAIN AND SBT'S ENDEAVORS

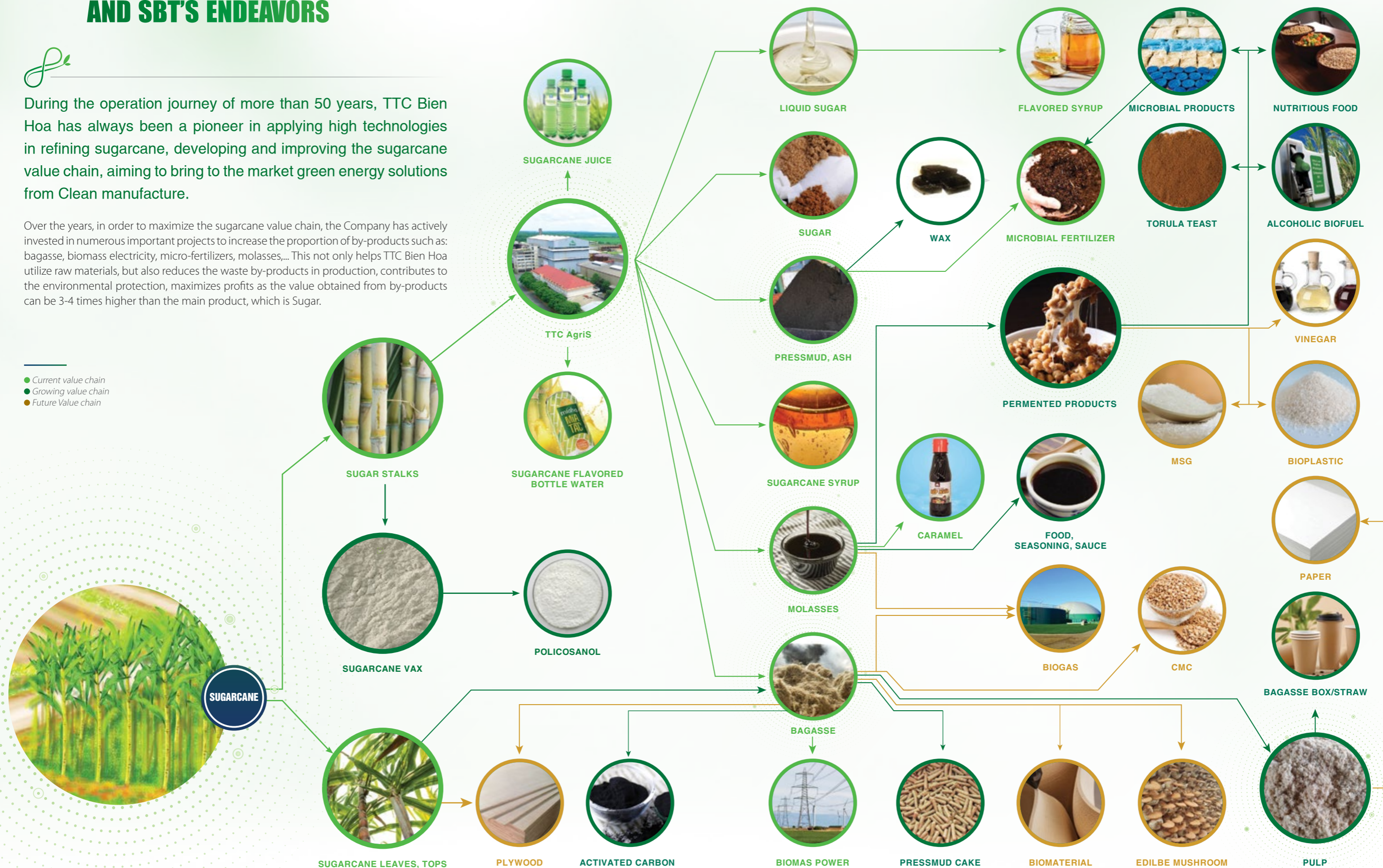
Source: TTC Bien Hoa



During the operation journey of more than 50 years, TTC Bien Hoa has always been a pioneer in applying high technologies in refining sugarcane, developing and improving the sugarcane value chain, aiming to bring to the market green energy solutions from Clean manufacture.

Over the years, in order to maximize the sugarcane value chain, the Company has actively invested in numerous important projects to increase the proportion of by-products such as: bagasse, biomass electricity, micro-fertilizers, molasses,... This not only helps TTC Bien Hoa utilize raw materials, but also reduces the waste by-products in production, contributes to the environmental protection, maximizes profits as the value obtained from by-products can be 3-4 times higher than the main product, which is Sugar.

- Current value chain
- Growing value chain
- Future Value chain



TTC BIEN HOA'S DIVERSIFIED PRODUCT PORTFOLIO



To become a leading business in Vietnam's Sugar Industry, TTC Bien Hoa has always remained prepared to overcome fluctuations and develop sustainably. Besides the diversification of the Sugar product portfolio, TTC Bien Hoa is also the leader in developing Sugar primary by-products and secondary by-products to best leverage the added value chain from sugarcane, pioneering in creating a comprehensive value chain and affirming competitive edges.



SUGAR PRODUCTS

- | | | | |
|--------------------------------|---------------------------|--------------------------|----------------------------|
| 8
Organic Sugar products | 11
Rock Sugar products | 3
Gold Sugar products | 4
Liquid Sugar products |
| 4
Functional Sugar products | 29
RE Sugar products | 14
RS Sugar products | 2
Mix Sugar products |



SUGAR PRIMARY BY-PRODUCTS AND SECONDARY BY-PRODUCTS

- | |
|---|
| 4
SUGAR PRIMARY BY-PRODUCTS |
| <ul style="list-style-type: none"> 2 bottled water MIAQUA products Bagasse Molasses |
| 8
SUGAR SECONDARY BY-PRODUCTS |
| <ul style="list-style-type: none"> Biomass commercial electricity 3 caramel products 4 Fertilizer products |



BEVERAGE PRODUCTS

- | | |
|-------------------------------------|---------------------------------|
| 3
NUTRITIONAL BEVERAGE PRODUCTS | 3
PURIFIED BEVERAGE PRODUCTS |
| 3
Sugarcane juice MIAHA products | 3
Beverage PURAQUA products |
- 




OTHER PRODUCT



Solar power

TTC BIEN HOA'S DIVERSIFIED PRODUCT PORTFOLIO

A SUGAR PRODUCTS

1 ORGANIC SUGAR TTC ATTAPEU/TTC BIEN HOA



PACKAGING: 1-ton bag, 25kg bag, 400g paper bag, 800g jar

PRODUCT: Gold Sugar, Brown Sugar

PRODUCT ADVANTAGES:

- Organic Sugar meets USDA and European standards;
- Clean product lines, production processes from sugarcane planting to production and sales complies with strict international organic regulations.

2 GOLD SUGAR

NATURAL GOLD SUGAR MIMOSA/CO BA/CANE SUGAR



PACKAGING: 50kg bag, 1kg pack (20-pack bag)

PRODUCT ADVANTAGES:

- Traditional product line, preserving natural flavors of sugarcane;
- High-quality product, undergoing strict control process according to FSSC 22000 standard.

3 ROCK SUGAR

PURE ROCK SUGAR BIEN HOA PRO/TSU DIAMOND



PACKAGING: 50kg bag, 10kg bag, 500g pack, 450g jar

PRODUCT: White Sugar, Gold Sugar

PRODUCT ADVANTAGES:

- Large-sized grains meet customer preferences;
- Providing a smooth, delicate sweetness to edible bird's nest drink, cooling drink, stewed Chinese medicine, sweet soup...

NATURAL ROCK SUGAR BIEN HOA PRO



PACKAGING: 500g pack

PRODUCT: White Sugar, Gold Sugar

PRODUCT ADVANTAGES:

- Handcrafted products, having large-sized grains that meet customer preferences;
- Providing a smooth, delicate sweetness to edible bird's nest drink, cooling drink, stewed Chinese medicine, sweet soup...

ROCK SUGAR MONOROCK CO BA/MIMOSA



PACKAGING: 25kg bag, 10kg bag, 1kg pack

PRODUCT: White Sugar, Gold Sugar

ƯU ĐIỂM SẢN PHẨM:

- Large-sized grains meet customer preferences;
- Providing a smooth, delicate sweetness to edible bird's nest drink, cooling drink, stewed Chinese medicine, sweet soup...



TTC BIEN HOA'S DIVERSIFIED PRODUCT PORTFOLIO

A

SUGAR PRODUCTS

4

FUNCTIONAL SUGAR



BAKING SUGAR BIEN HOA PRO

PACKAGING: 1kg pack (12-pack box)

PRODUCT ADVANTAGES:

- Having fine grains and no clumps;
- Being suitable for baking and making ice cream.



GOLD MINERAL SUGAR

PACKAGING: 1kg pack (20-pack bag)

PRODUCT ADVANTAGES:

- Being fortified with trace elements including Potassium, Calcium, Magnesium and Iron;
- Adding trace elements to daily diets.



"NU HOANG" DARK BROWN SUGAR

PACKAGING: 50kg bag 1kg pack (20-pack bag)

PRODUCT ADVANTAGES:

- Having doubled amount of molasses, no artificial colorings, good for health;
- Making sweet soup or baking, especially rice steamed cakes and pies.



DIET SUGAR BIEN HOA LIGHT

PACKAGING: 5g packet (250g box)

PRODUCT ADVANTAGES:

- Sweetener for people who go on a diet;
- Having healthy ingredients, thus helping manage hyperglycemia.



5

LIQUID SUGAR

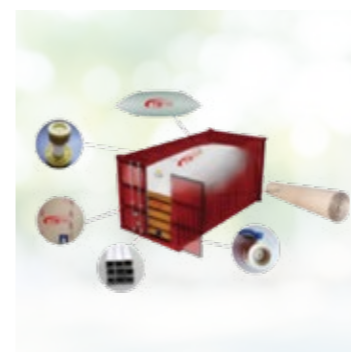


CONSUMER LIQUID SUGAR BIEN HOA MIA XANH

PACKAGING: 5l bottle 500ml bottle

PRODUCT ADVANTAGES:

- Providing convenience for consumers while cooking and drink making;
- Having natural sweetness.



EXPORTED LIQUID SUGAR

PACKAGING: Flexibag 18m³ ~ 24 tons

PRODUCT ADVANTAGES:

- Sugar content is stable, the product is easy to process and use;
- Providing convenience for corporate customers and help them reduce cost in labor, storage, production, . . .
- Meeting advanced requirements of green production and automation.



DOMESTIC LIQUID SUGAR

PACKAGING: 28l box

PRODUCT ADVANTAGES:

- Sugar content is stable, the product is easy to process and use;
- Providing convenience for corporate customers and help them reduce cost in labor, storage, production, . . .
- Meeting advanced requirements of green production and automation;
- TTC Bien Hoa offers support and consulting services.

TTC BIEN HOA'S DIVERSIFIED PRODUCT PORTFOLIO

A SUGAR PRODUCTS

6 RE SUGAR

EXTRA PREMIUM RE SUGAR BIEN HOA PURE/MIMOSA/TSU



PACKAGING:

50kg bag

0.5kg/1kg pack (40-pack bag/20-pack bag)

PRODUCT ADVANTAGES:

- High-end product in RE Sugar product line, having low color and high quality;
- Meeting the strictest demands of Pharmaceutical and Beverage industry according to international standards.

SPECIAL RE SUGAR BIEN HOA PURE/MIMOSA/STICKSU/BIEN HOA JOY/EXTRA PREMIUM CANE SUGAR



PACKAGING:

50kg bag

25kg bag

1/0.5kg pack

6g/8g stick (50-stick bag)

PRODUCT ADVANTAGES:

- High-quality product, meeting the strictest requirements of international beverage enterprises;
- Being convenient for customers to use.

EXPORTED RE SUGAR BIEN HOA PURE



PACKAGING:

50kg bag

25kg bag

PRODUCT ADVANTAGES:

- The standards meet the international requirements;
- Could be used in various industries.

PREMIUM RE SUGAR BIEN HOA PURE/MIMOSA/TSU



PACKAGING:

1-ton bag

50kg bag

25kg bag

800g jar

1kg/0.5kg pack (40-pack bag/20-pack bag)

PRODUCT ADVANTAGES:

- High-quality RE product for Customers who require high quality and medium color value;
- Having diverse packaging specifications.

STANDARD RE SSUGAR BIEN HOA PURE/MIMOSA/PREMIUM CANE SUGAR



PACKAGING:

1-ton bag

50kg bag

1kg/0.5kg pack (40-pack bag/20-pack bag)

PRODUCT ADVANTAGES:

- Standard-quality RE Sugar;
- Having competitive prices, meeting the demands of customers who require high control standards but do not mind the color.

CASTER RE SUGAR BIEN HOA/MIMOSA



PACKAGING:

50kg bag

PRODUCT ADVANTAGES:

- Standard-quality RE Sugar;
- Having competitive prices, meeting the demands of customers who require high control standards but do not mind the color.



TTC BIEN HOA'S DIVERSIFIED PRODUCT PORTFOLIO

A SUGAR PRODUCTS

6 RS SUGAR

EXTRA WHITE SUGAR CO BA/MIMOSA



PACKING:

50kg bag

12kg bag

PRODUCT ADVANTAGES:

- Meeting customers' demands for quality (nearly equivalent to RE) and color;
- Competitive price, established brand.

PREMIUM WHITE SUGAR BIEN HOA DAILY/MIMOSA/TSU



PACKING:

50kg bag

25kg bag

1kg/0.5kg pack (40-pack bag/20-pack bag)

PRODUCT ADVANTAGES:

- RS products with high-quality requirements;
- Having normal-sized grains and large-sized grains, meeting the diverse needs of customers;
- Competitive price, established brand.



STANDARD WHITE SUGAR TTC PHAN RANG/TTC GIA LAI/BIEN HOA SAVING/KIM CUONG DO



PACKING:

50kg bag

PRODUCT ADVANTAGES:

- RS products with high-quality requirements;
- Having normal-sized grains and large-sized grains, meeting the diverse needs of customers;
- Competitive price, established brand.



MIX SUGAR



PACKING:

50kg bag

PRODUCT ADVANTAGES:

- RS products with high-quality requirements;
- Having normal-sized grains and large-sized grains, meeting the diverse needs of exporting customers;



TTC BIEN HOA'S DIVERSIFIED PRODUCT PORTFOLIO

B

SUGAR PRIMARY BY-PRODUCTS

1

SUGARCANE-FLAVORED BOTTLED WATER MIAQUA



PACKING:

19l bottle

500ml bottle (24 bottles/box)

355ml bottle (24 bottles/box)

PRODUCT ADVANTAGES:

- Modern, closed-loop production process;
- No preservatives, the taste is absolutely all natural and delicate;
- Preserving the nature flavors of sugarcane without using additives during the extraction process.

2

BAGASSE



PRODUCT INFORMATION:

- By-products after juice extraction process;
- Fuel source for boilers at Sugarcane factories;
- Raw material for production of mushrooms, paper pulp, plywood, animal feed...;
- Raw materials for production of activated carbon preparations, microbial fertilizers, ...

USES:

- Input materials for the production of the Company's by-products.

3

MOLASSES



PRODUCT INFORMATION:

- By-products after Sugar production;
- The main components include saccharose, glucose, fructose, proteins, and minerals;
- Nutrients source for fermentation processes in the production of alcohol, MSG, animal feed, nutritional yeast...;
- TTC Bien Hoa has promoted R&D to enhance molasses value, making it suitable for processing, cooking, baking...

C

SUGAR SECONDARY BY-PRODUCTS

1

COMMERCIAL ELECTRICITY



PRODUCT INFORMATION:

- Generated from the boiler turbine after the bagasse-burning process;
- Partly used in the Company's activities, the remaining will be sold to the national grid;
- Renewable energy source from biomass fuel, helping reduce fossil fuel reliance and protect the environment;
- Help address electricity shortage problems occurring when the dry season adversely affects hydropower production.

USES:

- Behind the meter/on-site distribution;
- Sell to the national grid.

2

CARAMEL



"BEP XUA" CARAMEL

PACKING:

210g bottle (48 bottles/box)

28l can

PRODUCT ADVANTAGES:

- Natural molasses, ensuring food hygiene and safety requirements;
- Underscoring the unique flavor of natural molasses without the inclusion of any harmful colorants;
- Could be used in seasoning to enhance the colors of the dishes.



PURE CARAMEL

PACKING:

28l can

PRODUCT ADVANTAGES:

- Natural molasses, ensuring food hygiene and safety requirements;
- Underscoring the unique flavor of natural molasses without the inclusion of any harmful colorants;
- Having no preservatives, having a 6-month expiry time, being suitable for processing companies, could be used in place of chemical colorants, creating natural flavor for products as well as adding the nutritional value from molasses.

TTC BIEN HOA'S DIVERSIFIED PRODUCT PORTFOLIO

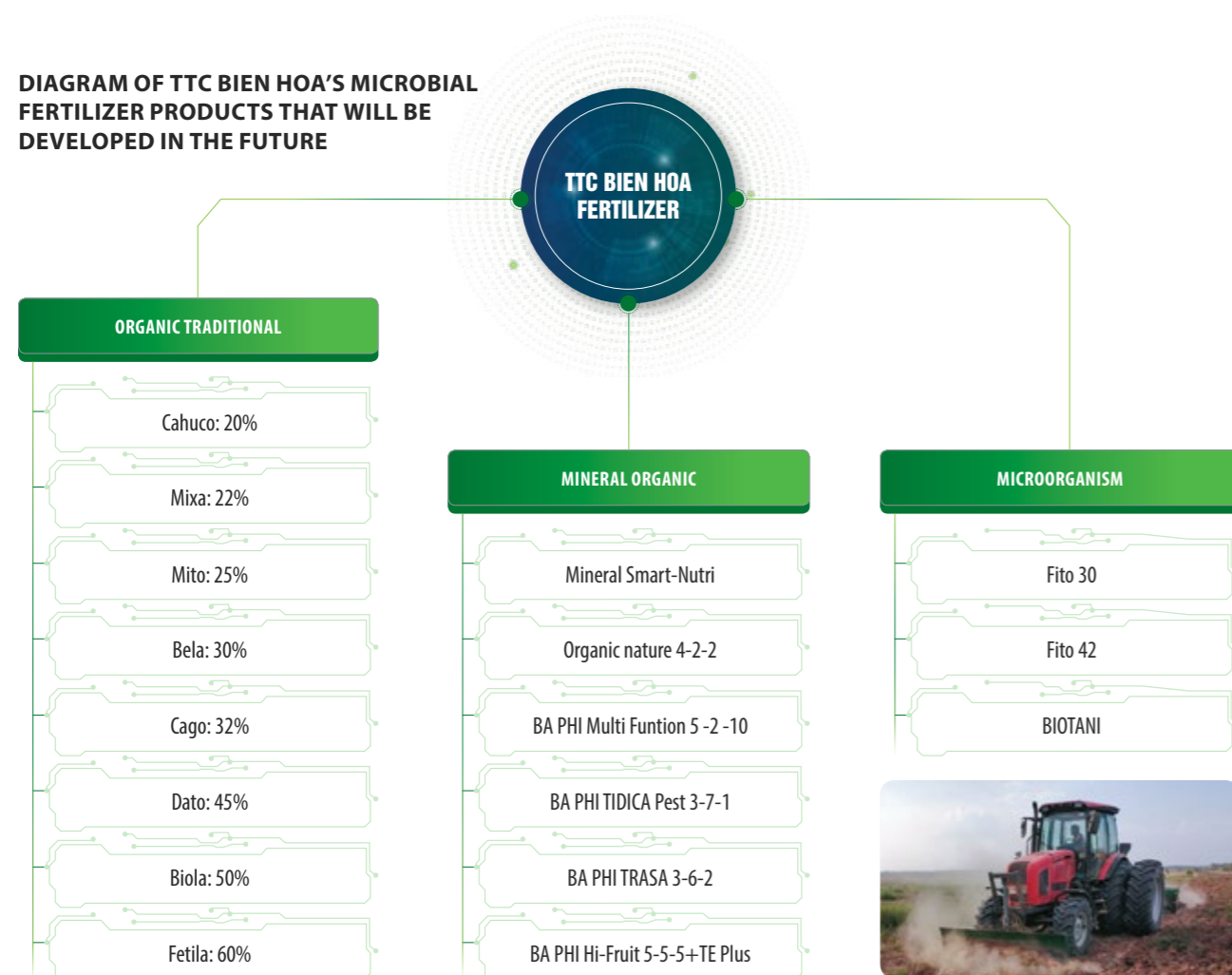
C SUGAR SECONDARY BY-PRODUCTS

3 ORGANIC MICROBIAL FERTILIZER

Organic microbial fertilizer is one of the products that TTC Bien Hoa pays special attention to develop among the product portfolio of sugar primary by-products and secondary by-products. With the expectation to help change the old farming habits of Vietnamese farmers, supporting land restoration, reducing costs and improving quality of Vietnamese agricultural products, TTC Bien Hoa has soon build the Thanh Thanh Cong Agriculture Development JSC (TTCAD), the main unit in charge of researching and developing the organic fertilizer product line with the Vision of **"Providing sustainable agricultural soil solutions, improving the yield, increasing profitability for farmers."**

After successfully deploying and putting 02 more factories into operation, TTC Bien Hoa now has 03 microbial fertilizer factories in Tay Ninh, Gia Lai, and Laos with a total capacity of 100,000 tons/year. With the goal of becoming the Top 5 enterprises producing and selling Organic fertilizers, Microbial fertilizers, and biological plant protection drugs, TTCAD continues to deploy and build one more microbial fertilizer factory in Ben Tre with a capacity of 35,000 tons/year, which is expected to come into operation in 2023-2024, thereby bringing the total production output to 150,000 tons/year in 2024-2025.

DIAGRAM OF TTC BIEN HOA'S MICROBIAL FERTILIZER PRODUCTS THAT WILL BE DEVELOPED IN THE FUTURE



ORGANIC MICROBIAL FERTILIZER PRODUCTS IN FY 2021-2022



ORGANIC MICROBIAL FERTILIZER MIXA

Product advantages:

- Increasing soil organic matter, soil quality, and soil fertility;
- Increasing yield and quality of crops, especially sugar content for sugarcane and carbohydrate content for cassava,...;
- Helping plants absorb nutrients and grow better, develop disease resistance.



ORGANIC FERTILIZER BELA

Product advantages:

- Increasing soil organic matter, soil quality, and soil fertility;
- Adding beneficial soil microorganisms, strengthening plant disease resistance, and ensuring high and stable productivity.



ORGANIC MICROBIAL FERTILIZER FITHOOCMON 30

Product advantages:

- Increasing soil organic matter, soil quality, and soil fertility;
- Adding beneficial soil microorganisms, strengthening plant disease resistance against blast disease and dry blight disease,...;
- Ensuring high and stable productivity;
- Producing antibodies and phytohormones that plants need to grow.



ORGANIC MICROBIAL FERTILIZER FITHOOCMON 42

Product advantages:

- Increasing soil organic matter, soil quality, and soil fertility;
- Adding beneficial soil microorganisms, strengthening plant disease resistance, and ensuring high and stable productivity;
- Providing essential nutrients for the growth and development of plants, helping plants grow more shoots and branches, as well as produce more fruit with firm seeds;
- Helping plants be more resistant to diseases, pests in changing climate conditions.



TTC BIEN HOA'S DIVERSIFIED PRODUCT PORTFOLIO

D

BEVERAGE PRODUCTS

1

CANNED SUGARCANE JUICE MÍAHA



PACKAGING:

240ml bottle (24 bottles/box)

PRODUCT ADVANTAGES:

- Modern and exclusive technology;
- Being 100% sterilized, keeping the unique yellow color of sugarcane;
- No preservatives, 100% natural;
- Combining with different juices for a variety of flavors;
- Currently having 03 lines of sugarcane juice with Peach, Kumquat, and Apple flavors.

2

PURIFIED WATER PURAQUA



PACKAGING:

19l bottle

500ml bottle (24 bottles/box)

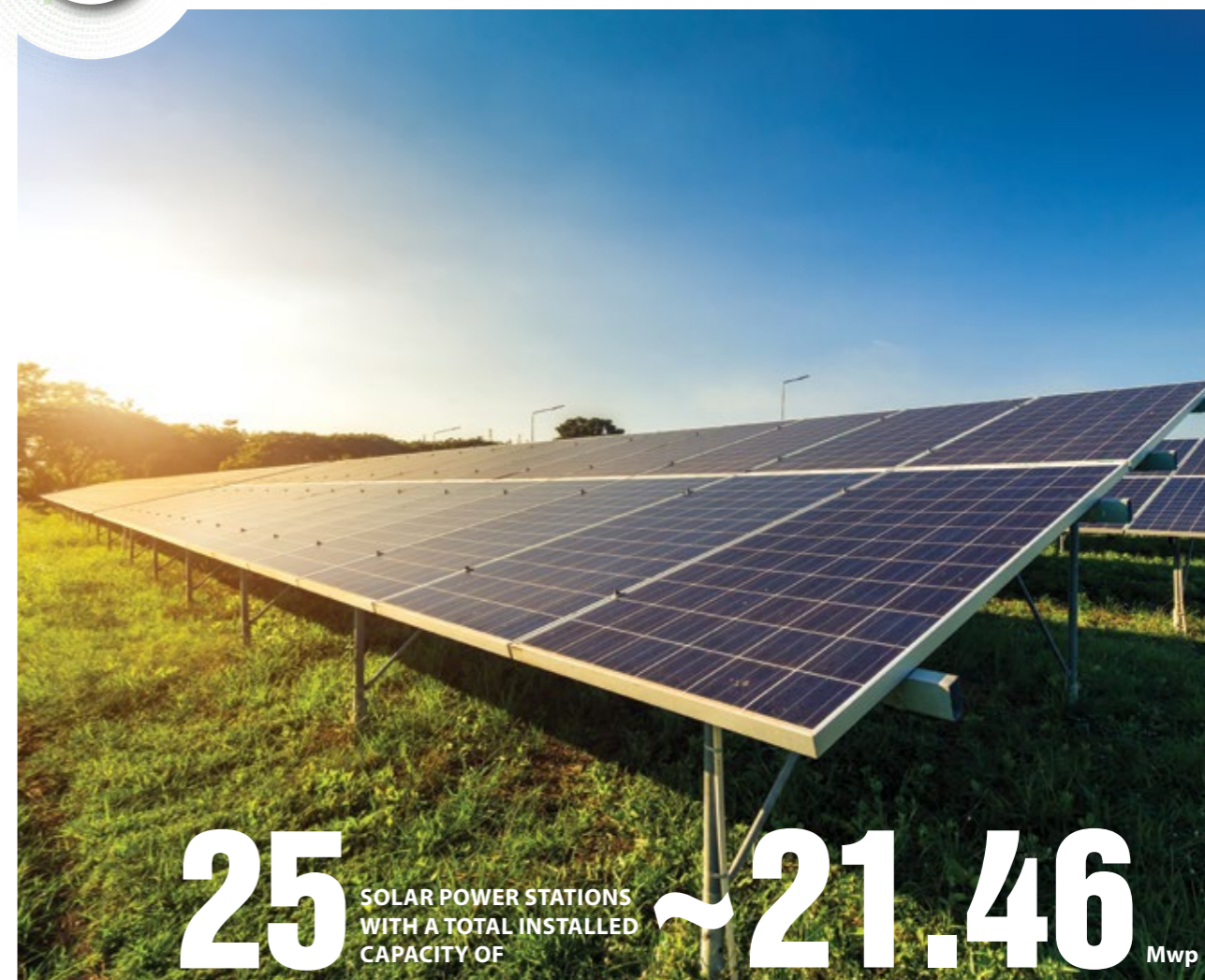
350ml bottle (24 bottles/box)

PRODUCT ADVANTAGES:

- Purified water Puraqua is processed through an RO filtration system, and disinfected by UV, ensuring purity and health safety.

E

OTHER PRODUCTS



25 SOLAR POWER STATIONS
WITH A TOTAL INSTALLED
CAPACITY OF **~21.46** Mwp

1

SOLAR POWER

USES:

- Behind the meter/on-site distribution;
- Sell to the national grid.

PRODUCT INFORMATION:

- The system of solar panels is permanently installed on the roofs of factories and offices of the affiliated members under TTC Bien Hoa, a total of 25 solar power stations with a total installed capacity of ~21.46 Mwp;
- Electricity is generated to serve the production and business activities, reduce greenhouse gas emissions and help protect the environment;
- The remaining electricity will be sold to the national grid, contributing to increasing revenue for the Company.

MAIN DISTRIBUTION CHANNEL



BUSINESS - B2B

LARGE MANUFACTURERS



SMALL MANUFACTURERS



In addition, there are more than **3,000** potential customers to be leveraged in the near future

COMMERCE

More than 607 Level 1, 2, 3, and 4 Agents nationwide

607 Customers
Up 73% over the same period

CONSUMPTION - B2C

Traditional Channels:

- **142 Partners:** Distributors and Agents
- **75,000 selling points:** Retail stores

Modern Channels:

- **58 Partners**
- **7,400 Selling points:** Supermarkets and Convenience Stores
- Maintain 4 booths on E-commerce platforms: Sendo, Tiki, Lazada, and Shopee

KA - Key accounts:

- **3,800 selling points**

HORECA Channel (Hotel - Restaurant - Canteen):

- **4 Partners**

200 Partners
~86,200 Selling points
Up nearly 8% over the same period

EXPORT

North America (1 Country): America

Europe (14 Countries):

United Kingdom, France, Italy, Spain, Netherlands, Germany, Belgium, Bulgaria, Czech Republic, Malta, Ireland, Romania, Croatia, Greece

Asia (9 Countries):

Japan, South Korea, Singapore, Taiwan, China, Thailand, Indonesia, Philippines, Cambodia

Pacific Islands (5 Countries):

Nauru, Papua New Guinea, Samoa, Solomon, Tahiti

29+ Countries
Up 21% over the same period